

[www.Trick-Tools.com](http://www.Trick-Tools.com)

2003

8 Pages of  
New Products

# Trick Tools

*High Performance Tools for the Fabricator*

***Van Sant***

Enterprises, Inc.

*Metal Fabricating Solutions*

# Van Sant

Enterprises, Inc.

## Metal Fabricating Solutions



Need more time? Are you a fabricator or race car builder that struggles to keep up with the demand for your product?

We can help.

Efficiency means profit. If you're running behind schedule or have bottlenecks in your operation, we offer equipment to build a better, more consistent product using less material while increasing production. Van Sant Enterprises is a company dedicated to bringing high quality, production type tube fabricating equipment to the racing industry. We offer bending machines from simple programmable units up to six inch capacity CNC Mandrel benders.

We are currently work with many of the top manufacturers and chassis builders in the country and here is what they have to say:

*"The 50 ton Jaws IV Ironworker has cut time off projects over 50%. Anyone can use it, and it is so versatile we would have had to purchase five machines to do what it has done"*

**Tony Barnes, Shop Foreman - ML Motorsports**

*"Maxim is very pleased with our recent tubing bender purchase from Van Sant Enterprises. The product and the service they provided was great!"*

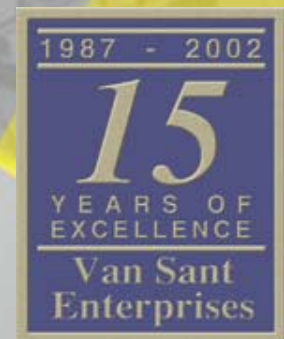
**Chuck Merrill, President - Maxim Racing Chassis**

*"The Ineco bender has increased our productivity in that department by up to 50% and is very user friendly."*

**Randy Williamson, Sec., Treasurer - Bicknell Racing Products**

*"We use our Ineco bender on a daily basis. It has never failed us, and produces consistent parts every time. It was money well spent!"*

**Gary Heidt, President - Heidt's Hot Rod Shop**



### OUR CUSTOMERS INCLUDE:

600 Racing - Legend Cars  
Addco Mfg. - Sway Bar Manufacturer  
Applied Racing Technology - Drag Racing  
Autojet Muffler - Truck & Bus Exhaust  
Becker's Welding and Repair - Sprint cars  
Behrent's Speed Center  
Bernheisel Race Cars Inc. - Modifieds  
Bicknell Racing Products - Circle Track  
Bourget's Bike Works - Custom Harleys  
Carriage Works - Harley Parts  
Co-Line Welding  
Dirty South Choppers - Choppers  
Gambler Competition - Sprint Cars  
Stanton Race Cars - Sprint Cars

GRT Race Cars - Modifieds & Late Models  
Harley-Davidson - Prototype Shop  
Harris Auto Racing - Dirt Track  
Heidt's Hot Rod Shop - Suspensions  
Horton Race Cars - Dragsters  
J&J Auto Racing - Sprint Cars  
John Gifford Race Cars - Dragsters  
Lefthander Chassis - Circle Track  
Lonestar Racing - Racing Quads  
Mallet Cars - Specialty Corvettes  
Mark Richards Racing - Dirt Modifieds  
Maxim Inc. - Sprint Cars / Midgets  
McKinney Corp. - Top Fuel Dragsters  
ML Motorsports - ARCA

Mullis Race Cars - Dragsters  
NASA  
PMFR - Drag Bikes  
Precision Race Cars - Drag Racing  
Pro Chassis - Dwarf Cars  
Soenen Motorsports - SCCA  
Spidertrax Offroad - Rock Crawlers  
Swartz Engineering & Fabrication  
Undercover Chassis - Dragsters  
Victory Circle Chassis - Circle Track

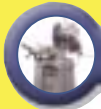
Check us out for all your fabricating equipment needs:

P.O. Box 346 • 415 E. Oskaloosa St. • Pella, IA 50219  
1-877-VAN-SANT • Phone 1-641-628-3206 • Fax 1-641-628-2614

Email: [sales@vansantent.com](mailto:sales@vansantent.com)

Monday - Friday 7:30 am - 5:30 pm CST





## SAWS

4 - 9

- Circular Cold Saws
- Mag Brush
- Slugger Metal Cutting Saw
- Cold Saw Blades
- Horizontal Band Saws
- Vertical Band Saws



## IRON WORKERS

10 - 11

- Edwards Ironworkers
- Duo Press
- Multi-Shear
- Tooling Sets
- Pro Hand Press



## TUBE COPING MACHINES

12 - 15

- Abrasive Belt Coping Machines
- Hole Saw Notchers
- Hole Saws
- Pipe Notchers
- Tooling Sets
- Pipe Masters



## WELDING ACCESSORIES

16 - 17

- Roto Star Welding Positioners
- Magnetic Welding Fixtures
- Tube Welding Positioners



## ANGLE FINDERS & LEVELS

18

- Digital Smart Tool
- Angle Finders
- Dial Levels
- Plain-Of-Bend Indicator



## TOOL STORAGE

19

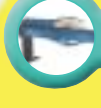
- Mobile Work Benches
- Pit Carts



## GRINDING & SANDING

20 - 23

- Multitool
- Portagrind
- Belt Grinders
- Bench Grinders
- Hard Core Grinders



## SHEET METAL MACHINES

24 - 28

- Boyd-Built Brakes
- National Shears & Brakes
- Hand Operated Lever Shear
- ProLine Planishing Hammers
- Press Brakes
- Sheet Metal Cutters



## BEAD FORM TOOLS

29

- Bead Form
- Bead Form Boss
- Bead Roller Set
- Tube De-Burring Machine



## TUBE BENDING MACHINES

30 - 39

- Design & Layout Software
- Hand Bending Machine
- Rotary Draw Benders
- Roll Bending Machines
- Mandrel Bending Machines

### Terms

Order Toll Free 1-877-VAN-SANT • 7:30 - 5:30 CST Monday - Friday or 24 hr Fax

Order Online: [www.Trick-Tools.com](http://www.Trick-Tools.com)

Shipping: We ship UPS COD and accept Visa, Mastercard, American Express and Discover. Shipments via common carrier must be prepaid and will be FOB point of origin.

Returns: No returns without prior approval. No returns after 30 days. Products must be in original package in new/unused condition. Returns must be shipped prepaid. A restocking fee will be applied.

Freight Claims: Any claims for damage or loss must be filed with carrier by purchaser. Prices and specifications subject to change.

[www.Trick-Tools.com](http://www.Trick-Tools.com)





## Circular Cold Saws

Our circular cold saws are the quickest and most accurate way to cut tubing, bar stock and structural shapes without the mess of chop saws and much faster than band saws. The low speed blade with coolant produces a mill quality, burr free cut without heating up the material. The head of the machine can easily be rotated to perform miter cuts or even slot down the end of a tube (350 model only).

We are proud to offer the Dake line of coldsaws. These industrial quality saws were chosen for their heavy duty spindles and gearboxes and for the superior warranty they offer. All the Dake saws come with a pedestal, blade, tool kit, coolant, adjustable stop and service manual. Call us for information on the complete line including semi-automatic and automatic applications.

### Standard Features

- **Head rotates 45 deg.** right and left of center for miter cutting (350 model rotates 90 degrees)
- **Oversized spindle** and gear assembly with steel spindle and bronze gear
- **Additional ball bearing** support of hardened and ground spindle shaft to prevent failure
- **Bronze gear** with tapered roller bearing support
- **Cam activated vise** with gib adjustment and anti-burr arm (except 250)
- **Reliable mechanical coolant pump** with flow control adjustment
- **315 & 350 models** feature 24v. control circuit, E-stop switch, low voltage and thermal protection, optional pneumatic vise
- **350 model** features an adjustable clutch and a third speed for non-ferrous applications

### SPECIFICATIONS

<b>Cut 250</b>	10" blade	1.2hp/110v	44 RPM	378 lb.	<b>\$1995.00</b>
<b>Super Cut 315</b>	12.5" blade	2.5hp, 220/440v 3ph	22/44	393 lb.	<b>\$2775.00*</b>
<b>Super Technics 350</b>	14" blade	3.5hp, 220/440v 3ph	22/44/88	650 lb.	<b>\$4995.00*</b>

\*add \$150.00 for 440 volt

CAPACITY	Round solid		Round Tube		Square Tube		Rectangle Tube	
	90°	45°	90°	45°	90°	45°	90°	45°
Cut 250	1-1/4"	1"	2-3/4"	2-3/8"	2-1/2"	2-1/8"	3-7/8x1-3/4	2-1/2x1-7/8
Super Cut 315	2-1/8"	1-3/4"	3-5/8"	3-1/2"	3-1/4"	3-1/8"	4-1/4x2-3/4	3-1/4x2-3/4
Super Technics 350	3-3/8"	3"	4-3/4"	4"	4-1/8"	3-3/8"	6-1/4x3-1/2	3-3/8x2-3/4

## Mag Brush



The Mag Brush helps pick up filings and chips or even small parts by the use of a powerful magnet. Simply pull the plunger out to release over a bin or wastebasket. Saves time and money in cleanup. So handy you'll want one by all your machines.

- Mag Brush (15" length)** . . . . . **\$29.95**  
**Super Mag Brush (36" length)** . . . . . **\$79.95**

S  
A  
W  
S

Our smallest cold saw is a lightweight bench model that can be easily moved to various workstations to complete cutting operations throughout the shop or on the job site. With a durable cast iron construction, the Willy 225 can cut small solids, tubing and structural shapes quickly with a smooth, mill like finish.



### Standard Features

- Miter cuts from 0° to 45° to the left
- Bronze worm gear and hardened ground worm screw in an oil bath gear box
- Control handle with safety spring loaded trigger switch to start or stop the machine
- Coolant system
- Manual vise
- Adjustable work stop

Willy 225 ..... \$1097.00

#### CUTTING CAPACITIES

DEGREE	ROUND	SQUARE
90	2-1/2"	2-5/16"
45 Left	2-1/8"	2"

#### SPECIFICATIONS

Model Number:	W225
Motor:	1 HP
Blade Speed (RPM):	50
Blade Size (mm):	225 x 32 x 2
Maximum Blade Size:	9"
Vise Opening Max.:	2-3/4"
Weight (lbs.)	84

S  
A  
W  
S



### Slugger Metal Cutting Saw

"The Most Incredible Power Tool Invention of the Decade"  
"Cuts Steel as Easily as Cutting Plywood"

MCSL07 (110V) ..... \$329.95  
MCBL07 blade (not included) ..... \$39.95

#### Features

- Faster, cleaner, safer, and more affordable than portabands or other metal cutting equipment
- Specifically designed cover to collect virtually *all chips and sparks*.
- Lightweight *only 13 lbs.*
- Cutting depth up to 2"
- Spindle lock for fast easy blade changes
- Bevels up to 45°
- High quality construction
- Overload switch

#### APPROXIMATE BLADE LIFE

Material	Size	# of Cuts
Angle Steel	2"x2"x1/4"	300x (approx)
Square Tube	2"x2"x3/16"	300x (approx)
Round Pipe	2"x1/4"	150x (approx)
Plate Steel	1/4"	250 feet (approx)

## Cold Saw Blades

Diameter in (mm)	Bore/Thickness (mm)	Price
225	32 / 1.6	\$73.00
225	32 / 2.0	\$73.00
250	32 / 1.6	\$89.00
250	32 / 2.0	\$77.00
250	32 / 2.5	\$81.00
275	32 / 2.0	\$97.00

Diameter in (mm)	Bore/Thickness (mm)	Price
275	32 / 2.5	\$101.00
275	32 / 3.0	\$108.00
315	32 / 2.5	\$131.00
315	32 / 3.0	\$152.00
350	32 / 2.5	\$159.00
350	32 / 3.0	\$168.00

Tube Diameter	Wall Thickness	Blade Diameter					
		225mm / 9"	250mm / 10"	275mm / 10.75"	315mm / 12.5"	350mm / 14"	
For Stainless Steel x 1.2	1/2"	.030"-.090"	220	240	280	300	320
	1/2"	.090"-.150"	200	220	240	280	300
	1/2"	solid	180	180	200	220	280
	1"	.030"-.060"	220	240	280	300	320
	1"	.060"-.090"	220	220	240	280	300
	1"	.090"-.150"	180	220	220	240	280
	1"	solid	120	120	140	180	240
	1-1/2"	.030"-.060"	220	240	260	300	320
	1-1/2"	.060"-.090"	200	220	240	280	300
	1-1/2"	.090"-.150"	180	200	220	240	280
	1-1/2"	.150"-.250"	140	160	180	200	220
	1-1/2"	solid	100	100	120	140	200
For Aluminum Multiply Tooth # x.75.	2"	.030"-.060"	240	260	280	300	320
	2"	.060"-.090"	180	200	220	240	280
	2"	.090"-.180"	140	160	180	200	220
	2"	.180"-.300"	120	140	160	180	200
	2"	.300"-.500"	100	110	120	140	160
	2"	solid	80	80	100	120	140
	2-1/2"	.030"-.060"	240	260	280	300	320
	2-1/2"	.060"-.090"	200	220	240	260	280
	2-1/2"	.090"-.150"	140	160	180	200	220
	2-1/2"	.150"-.250"	120	140	160	180	200
	2-1/2"	.250"-.400"	100	110	120	140	160
	2-1/2"	.400"-.500"	90	100	110	120	140
2-1/2"	solid	60	60	70	80	90	
For Aluminum Multiply Tooth # x.75.	3"	.030"-.060"			280	300	320
	3"	.060"-.090"			240	260	280
	3"	.090"-.150"			180	200	220
	3"	.150"-.250"			160	180	200
	3"	.250"-.400"			120	140	160
	3"	.400"-.500"			100	120	140
	3"	solid			60	80	
For Aluminum Multiply Tooth # x.75.	3-1/2"	.030"-.060"				300	320
	3-1/2"	.060"-.090"				260	280
	3-1/2"	.090"-.150"				200	220
	3-1/2"	.150"-.250"				180	200
	3-1/2"	.250"-.400"				140	160
	3-1/2"	.400"-.500"				120	140
	3-1/2"	solid				60	80

### Blade Sharpening and Regrinding

Cold saw blades can be sharpened, re-ground, or even re-toothed and used many times over. We offer quick turn around times. Condition of blade dictates which service is necessary.

Sharpening .....	\$28.60
Re-Grind .....	\$30.64
Re-Tooth .....	\$36.20
Water-Based Saw Coolant (gal.) .....	\$24.00



## Band Saws

Kama has designed and built these powerful bandsaws with exceptional and innovative designs that are unique to the market. These designs give the user the most precise bandsaw cutting available, in a machine that is quiet yet powerful and uses shop space very efficiently. Ongoing technical research guarantees our bandsaws are capable of satisfying your cutting requirements in a prompt, accurate and safe manner, by incorporating the latest developments.

### Stationary Bandsaws

- 6-3/4" capacity
- 2 speed gear drive
- Modular steel base
- Integral coolant system



<b>EV 996-2301 Stationary Bandsaw (230v 1ph)</b> .....	<b>\$2295.00</b>
<b>EV 996-2303 Stationary Bandsaw (230v 3ph)</b> .....	<b>\$2295.00</b>
<b>EV 996-1101 Stationary Bandsaw (110v 1ph)</b> .....	<b>\$2395.00</b>
<b>9962612 Optional Casters and Caster Frame</b> .....	<b>\$279.00</b>

#### BLADE OPTIONS

9960001406	6'3"x.035x3.4	4-6 TPI Bi-Metal Blade .....	\$22.50 ea.
9960001610	6'3"x.035x3.4	6-10 TPI Bi-Metal Blade .....	\$22.50 ea.
9960001812	6'3"x.035x3.4	8-12 TPI Bi-Metal Blade .....	\$22.50 ea.
9960001014	6'3"x.035x3.4	10-14 TPI Bi-Metal Blade .....	\$22.50 ea.

Blades are sold in packs of 5 only.



### Portable Bandsaws

- 4" capacity
- 2-1/4 Horsepower
- Variable speed - 60 to 330 FPS
- 110 volts, 42 lbs. - completely portable!

<b>AD105S Portable Bandsaw (110v)</b> .....	<b>\$699.95</b>
<b>NEW! Hand Held Model</b> .....	<b>\$499.95</b>

#### BLADE OPTIONS

1050071014	44-7/8"x.025x1/2"	10-14 TPI Bi-Metal Blade.....	\$11.95 ea.
1050071018	44-7/8"x.025x1/2"	18 TPI Bi-Metal Blade.....	\$11.95 ea.
1050071610	44-7/8"x.025x1/2"	6-10 TPI Bi-Metal Blade.....	\$11.95 ea.
1050071812	44-7/8"x.025x1/2"	8-12 TPI Bi-Metal Blade.....	\$11.95 ea.
1050071DIA	44-7/8"x.025x1/2"	DIAMOND .....	\$129.00 ea.

Blades are sold in packs of 10, except Diamond

## Horizontal Band Saws



These heavy-duty horizontal band saws from Dake have features normally only available on much more expensive machines. The heavy cast bed and housing makes for accurate and vibration free cuts while the low voltage controls, auto shut off and overload protection provide operator safety and machine longevity. These saws are covered by Dake's standard one-year warranty and come with the following standard equipment.

- Rugged gear box with bronze and steel gears
- Hydraulic control for down feed with locking valve
- Quick release vise and hand wheel action lead screw
- Chip brush blade cleaner
- Re-circulating coolant system

Model	Capacity	Blade Size	Speeds	Motor	Dimensions	Weight
SE712	7" round	93"x3/4"	85/130/180/235	3/4 hp 110v	56x21x39h	350 lbs.
SE912	9" round	103.5"x1"	98/164/246/328	1 hp 110v	56x21x41h	520 lbs.

SE712 Horizontal Band Saw (110v) ..... \$975.00  
SE912 Horizontal Band Saw (110v) ..... \$1,675.00

## Mitering Head Band Saw

These industrial duty mitering head band saws swivel up to 60 degrees so your material doesn't have to and their relatively small footprint helps out where space is limited. Both SAR machines use a 1" blade for the most accurate cut and are driven by a direct drive gear box. A hydraulic down feed with a lock out push/pull control and adjustable balanced head makes for smooth and simple repetitive operation.

- Low voltage controls meet CE standards
- End of cut and blade breakage shut off
- Quick cam lock vise
- Chip brush blade cleaner
- Re-circulating coolant system
- Pre-set blade tension stop



Model	Capacity	Blade Size	Speeds	Motor	Dimensions	Weight
SAR220	9" round, 9.5"x6" rect.	96.5"x1"	112/230	2 hp	33x58x61h	728 lbs.
SAR270	10.5" round, 13"x10" rect.	115"x1"	118/236	2.5 hp	43x72x70h	948 lbs.

SAR220 Mitering Head Band Saw (220v 3ph) ..... \$3,925.00  
SAR270 Mitering Head Band Saw (220v 3ph) ..... \$5,425.00

S  
A  
W  
S



**Trademaster**

**Vertical Band Saws**



These quality vertical saws by Dake are built to last. With capacities up to 41", we have a saw to fit any job and budget. Options like blade welders, power feed and tilt tables make these machines a great value. The 14-10 and Trademaster are **built in the USA**, the E-16 is European and all are covered by Dake's one year warranty. Please call us for machines not listed.

- 14-10** – tilt table, 4 speeds, high performance at a low price (110/220v 1ph or 220/440v 3ph) ..... **\$2,495.00**
- E-16** – tilt table, variable speed, digital tach, large capacity (220v 3ph) ..... **\$3,400.00**
- Trademaster** – power feed tilt table with 11" travel, variable speed, work lamp (220/440 3ph) ..... **\$4,950.00**

Model	Blade Width	Blade Speed	Motor	Throat Cap.	Work Height	Weight
14-10	1/4"-1/2"	70/140/270/540	1 hp	14"	10"	500 lbs.
E-16	1/8"-5/8"	60-590	1.5 hp	16"	11"	975 lbs.
Trademaster	1/4"-1"	50-500	1.5 hp	19.5"	12"	1,050 lbs.

This gravity fed saw is a mix of old proven technology with some new tricks. The material stays clamped in the vise while an adjustable gravity feed allows for hands-free operation. It can also be used as a cut off saw, contour saw, and rip saw with very little set up for production. The new front mounted hydraulic feed regulator and CE approved electric box with e-stop make it a much safer and easier saw to use than the competition. This sturdy machine is **made in the USA** and is available with optional chip blower or casters for portable use.

- SXC Gravity Feed Band Saw**  
(110/220v 1ph or 220/440v 3ph) ..... **\$3,250.00**
- Optional casters ..... **\$92.50**

**Work-A-Matic SXC**



Model	Blade Width	Capacity	Blade Travel	Blade Speed	Motor	Weight
SXC	1/4"-3/4"	9"x14.5"	9"	70/140/270/540	1 hp	770 lbs.

## Iron Workers

These Ironworkers are available at the best (lowest) price per ton in the industry. The Edwards Ironworker is a compact, well designed, well built, uncomplicated hydraulic ironworker. All machines work on the same principle with the center pulling straight down on the work. All tooling moves in a perfectly vertical way. There is no arc of tool against material to be cut or punched. All stations operate as a unit so you can move from punch to shear to notcher to angle shear without changing or adding any new equipment.

### Jaws IV



The line starts with the "JAWS JR." 25 Ton unit which gives you a dedicated punch station and one open station for tooling of your choice. (See page 11) The 50 and 55 ton units also include plate and angle shears. The 65 ton machine has a huge 24" plate shear, angle shear, coper notcher, punch station and open station as well. Please call for more information on other models up to 125 tons and available options.

- Jaws Jr. 25 ton (110/220v 1hp 1ph) ..... \$2,696.00
  - Jaws IV 50 ton (220v 3hp 3ph\*) ..... \$4,896.00
  - Jaws IV 55 ton (220v 3hp 3ph\*) ..... \$5,496.00
  - Jaws V 65 ton (220v 7.5hp 3ph\*) ..... \$9,996.00
- \*add \$200 for single phase

Capacities	Jaws Jr 25 ton	Jaws IV 50 ton	Jaws IV 55 ton	Jaws V 65 ton
Punch	1" through 5/16"	1" through 5/8"	1-1/6" through 5/8"	1-1/16" through 3/4"
Plate Shear	1/4" x 6" (opt.)	1/2" x 10"	3/8" x 14"	3/8" x 24"
Angle Shear	2" x 1/4" (opt.)	4" x 1/4"	4" x 1/4"	5" x 3/8"

### New Product!

- 30 Tons of Power
- 2 Tooling Stations
- Hydraulic Power For Any Bump Die Tooling
- 10" Open Height
- New 3" Stroke

This two station press can be used with a variety of tooling. Its large open height and 3" stroke make it extremely versatile for bending operations or punching and shearing. It features a remote foot pedal control and comfortable working height. The hydraulics on this machine can even operate other machines such as tube benders.

### Duo Press



- Duo Press 30 ton (220V 3hp 1ph or 3ph) ..... \$3,596.00

IRONWORKERS

### Multi-Shear



This versatile tool is a great value and works in many ironworkers and presses. It includes a 2" x 2" x 1/4" angle shear, square and round rod shears up to 1" and a 6" x 1/4" plate shear. Works great in conjunction with the Jaws ironworkers.

### New Product!

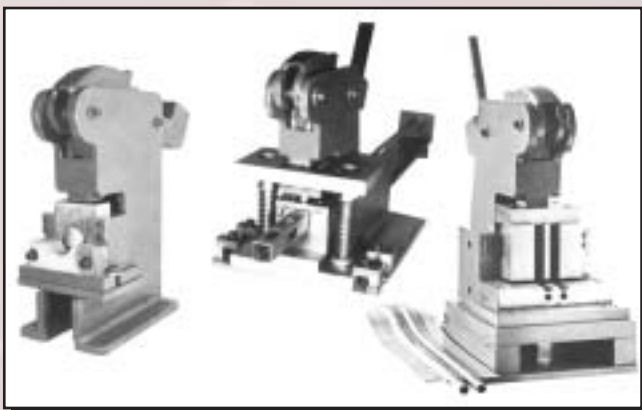
Multi-Shear ..... \$496.00

### Tooling Sets

<b>PIPE NOTCHER</b>	<b>COPER NOTCHER</b>	<b>90° ANGLE NOTCHER</b>	<b>BRAKE</b>	<b>PUNCH STATION STANDARD</b>
<b>ROD SHEAR</b>	<b>BAR SHEAR</b>	<b>ANGLE SHEAR</b>	<b>CHANNEL SHEAR</b>	<b>PUNCH STATION 28XX</b>

Please call for pricing specific to your tooling application.

### Pro Hand Press



This hand operated bench top press has an eight ton capacity and can be fitted with a variety of tooling options for small production runs or occasional projects. The die sets can be used in our ironworkers or the Duo Press (shown below) and are available for tube notching, slotting, punching, or shearing operations. Call for a tooling quote on any custom application.

Pro Hand Press (tooling not included) ..... \$489.00

## Tube Coping Machine



This high speed abrasive tube coping machine is a fast and cost effective method to fit tubes together prior to welding. The high speed grinding belt provides a smooth polished surface at any angle from 0 to 60° in tubing from 3/4" up to 4.5" OD. There is a guarded belt surface on top ideal for grinding or deburring. Belt life is generally around 100-200 copes per belt depending on material. Three mandrels of your choice and ten belts are included and change out in seconds with no tools required.



The standard machine is built with a slightly lighter frame and uses hand levers (shown right) for vice positioning rather than a cross feed table and hand wheels on the Heavy Duty model (shown above left).



Technical Data	Standard	Heavy Duty	6" Heavy Duty
Belt Size	4"x78-3/4"	4"x78-3/4"	6"x78-3/4"
Motor	4.0 hp	4.0 hp	7.5 hp
Speed	3420 RPM	3420 RPM	3420 RPM
Capacity	3/4"-3"	3/4"-3"	3/4"-4-1/2"
Belt Speed	98.4 fps	98.4 fps	98.4 fps
Weight	430 lbs.	517 lbs.	625 lbs.
Size	59"Lx47"Hx19"W	59"Lx47"Hx19"W	59"Lx47"Hx26.5"W

- Standard Coping Machine NJYAL100U (220v 3ph) ..... \$3,395.00
  - Heavy Duty Coping Machine NJYAL100 (220v 3ph) ..... \$5,595.00
  - NEW!! 6" width Heavy Duty Coping Machine NJYAL150 (220v 3 ph) ..... \$6,295.00
- (Machines include three mandrels of your choice and a box of 10 standard belts)

*New Premium Grade 3M Ceramic Belts - Better Quality, Reduced Price!*

Qty 1-9	Qty 10-49	Qty 50+
\$18.04 each	\$16.24 each	\$14.89 each

6" 24 grit premium grinding belts for NJYAL150 (sold in box of 10) ..... \$25.00 ea.

T  
U  
B  
E  
  
C  
O  
P  
I  
N  
G  
  
M  
A  
C  
H  
I  
N  
E  
S

## TN-100 Tube Notcher

The notcher for the builder who knows quality tools and demands the best.

### Features:

- **Large capacity and low cost** - The TN-100 notches 3/4" through 2" O.D. tubing at angles up to 50° in under 20 seconds. It uses commonly available bimetal hole saws costing approximately \$10.
- **Easy to use** - The TN-100 may be mounted in a drill press or simply clamped in a vise and used with a 1/2" hand drill. The TN-100 can be laid horizontal when notching 45° angles, so the floor will not interfere with the tubing being notched.
- **Heavy duty frame** - Entirely CNC machined, the frame is made from 1/2" thick 6061-T6 aluminum and its face has been milled flat. The degree increments are then machined directly into the frame so they can't wear off. An all position swivel base ensures easy setup.
- **Rigid bearing block** - This is the most critical part of a hole saw style notcher. The TN-100's bearing block uses twin needle bearings and separate grease seals for maximum rigidity and reliability. A 3/4" ground and polished stainless steel shaft protects against the possibility of rust contaminating the precision bearings.
- **Strong, accurate tube cradle** - As can be seen in the picture, the entire cradle and clamp assembly have been CNC machined out of a solid steel block so the tube will be notched exactly in the middle. This eliminates the problems of tube walk in notchers that use a U-strap.
- **Satisfaction guaranteed** - Built and guaranteed to be the best, the TN-100 is fully covered by a 14 day trial period guarantee and a full 1 year on parts and workmanship. Don't be fooled by cheap imitations!



TN100 Tube Notcher (less hole saw) .....\$179.00

## Hole Saws **New Product!**

Through testing on our own projects we have found these quality hole saws by Sioux are the perfect cutter for use in our TN-100 Tube Notcher (see page. 24 catalog) and they work great for other applications as well. The fine tooth pattern and extra heavy vanadium body will long outlast competitive hole saws. Available in a 7 piece starter kit or individually.



Part Number	Diameter	Thread Size	Arbor	Price
S377	3/4"	1/2" - 20	352B	\$9.00
S378	7/8"	1/2" - 20	352B	\$9.00
S379	1"	1/2" - 20	352B	\$9.46
S380	1-1/8"	1/2" - 20	352B	\$9.46
S381	1-1/4"	5/8" - 18	353A	\$9.46
S382	1-3/8"	5/8" - 18	353A	\$9.70
S383	1-1/2"	5/8" - 18	353A	\$9.70
S384	1-5/8"	5/8" - 18	353A	\$9.70
S385	1-3/4"	5/8" - 18	353A	\$12.80
S387	2"	5/8" - 18	353A	\$12.88



**S276 - 7 piece Hole Saw Kit in plastic case** .....\$49.95  
(includes 7/8", 1", 1-1/8", 1-1/4", 1-1/2", arbor and adapter)

**More Coping Options...**

These methods are useful when repetitive simple coping operations are required. The Manual and Automatic Notchers are available only in pipe sizes and for a 90° cope. The tooling sets fit in your ironworker or our Pro Hand Press (see page 11) and can be designed for any size tubing and any fixed angle desired.

- Low cost
- Quick and easy
- Portable
- Mounts to any stationary surface
- Notches up to schedule 40



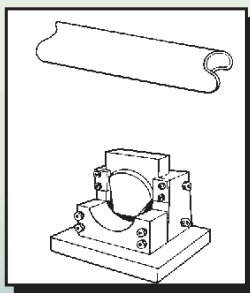
NJYAL3 (includes 1-1/4" and 1-1/2" pipe sizes)	.....	\$849.00
NJYAL2 (includes 1-1/2" and 2" pipe sizes)	.....	\$799.00
NJYAL1 (includes 3/4", 1" and 1-1/4" pipe sizes)	.....	\$649.00
NJYALU (manual vent notcher)	.....	\$674.00



- Fast & efficient
- Electrically driven operation
- 220V or 440V 3 ph
- Optional vent notcher
- Includes five pipe sizes from 3/4" to 2" sched 40



**Automatic Pipe Notcher - AL12E** ..... **\$4,995.00**



- Built to fit most popular ironworkers or Pro Hand Press (pg 9)
- Angle notch units available, call with application
- Larger sizes available as well as punching, slotting or shearing

**Tooling Set - #1000 Series (Housing)** ..... **\$225.00**  
**Die Sets** ..... **\$250.00 - \$350.00 Each**  
 please call with your application

photos courtesy of Spidertrax Off-Road



## PipeMasters

PipeMasters are the perfect companion to any of our notchers. These timesavers will easily pay for themselves when fitting tube or pipe together. Individual sizes will slip over the tube with a .020" clearance or can be used free hand. The steel pins contour to the shape desired which can be transferred to the work piece. Kits come in a foam lined carrying case. Call for sizes not listed.



- 77970 PipeMaster Basic Kit (3/4", 1", 1-1/2", 1-3/4") ..... \$175.95  
 77980 PipeMaster Pro Kit (9 sizes, 3/4" - 1-3/4") ..... \$389.95

P/N	Tube Size	Price
PT075	3/4"	\$39.95
PT085	7/8"	\$39.95
PT100	1"	\$39.95
PT1125	1-1/8"	\$39.95
PT125	1-1/4"	\$39.95
PT1375	1-3/8"	\$45.95
PT150	1-1/2"	\$45.95
P125	1-5/8"	\$49.95
PT175	1-3/4"	\$49.95
PT200	2"	\$55.95



- P-1KIT Nominal Pipe Size Kit (1", 1-1/4", 1-1/2", 2" pipe) ..... \$225.95

Parts Number	Nominal Pipe Size	Pipe O.D.	Price
P-100	1"	1.315"	\$45.95
P-125	1-1/4"	1.660"	\$49.95
P-150	1-1/2"	1.900"	\$55.95
P-200	2"	2.375"	\$55.95
P-250	2-1/2"	2.875"	\$105.95
P-300	3"	3.500"	\$105.95
P-400	4"	4.500"	\$162.95
P-500	5"	5.563"	\$190.95
P-600	6"	6.625"	\$292.95



## Roto Star Welding Positioners



The Roto Star welding positioners are a must for precision welding. These heavy duty units were designed to increase productivity and improve quality for a variety of applications. They can be ordered with a standard 3 jaw chuck with through hole and 250 lbs of capacity, or a surface plate for fixturing work pieces. They are adjustable from 0 to 90° by 15° increments and feature a 300 amp double grounding system which eliminates feedback during high frequency welding. A reversible variable speed control unit and foot pedal allow hands free operation. Optional accessories include variable speed foot pedal, adjustable idler roller assembly and arm rest.

### Roto 1-P



### RO570



Roto1 (with 6" chuck) .....	\$2,095.00
Roto1-P (with 12" surface plate) .....	\$1,695.00
(add \$300 for variable speed foot pedal)	
Roto3 (with 8" chuck) .....	\$2,595.00
Roto3-P (with 16" surface plate) .....	\$2,295.00
(add \$400 for variable speed foot pedal)	
RO501 12" Surface Plate .....	\$299.00
RO505 16" Surface Plate .....	\$349.00
RO510 Adjustable Arm Rest .....	\$249.00
RO570 Idler Roller Assembly .....	\$360.00

W  
E  
L  
D  
I  
N  
G  
  
A  
C  
C  
E  
S  
S  
O  
R  
I  
E  
S



## Tube Welding Positioners



shown with AL2 dial level

**New Product!**

This tube welding positioner is a great tool for race car builders and tube fabricators. It can be adjusted to any angle and will securely hold your parts for tack welding without magnetizing. This simple tool can save hours of frustration when working with coped tubes. (Actual tool has black oxide coating.)

TC1 Tube Welding Positioner ..... \$34.50

### M1500, 2500



### M4500, 8500



### M6500



## Magnetic Welding Fixtures

These handy welding magnets are designed for quick and accurate positioning of parts during tack welding, layout and assembly processes. Utilizing the strongest magnets available, these magnets are the perfect solution for welders looking to improve work quality and reduce costly setup time.

- M1500 (sm multi angle set of 2) ..... \$16.00
- M2500 (lg multi angle set of 2) ..... \$25.50
- M3500 (90° 5.5") ..... \$32.00
- M4500 (adjustable 5.5") ..... \$50.00
- M8500 (adjustable 8.5") ..... \$72.00
- M5500 (90° 8.5") ..... \$53.00
- M7500 (90° 11.75" with release levers) ..... \$69.75
- M6500 (90° inside corner 5.5") ..... \$65.00
- M9500 (sheet pickup magnet) ..... \$50.00
- M1000 Complete Set of 11 ..... \$399.99

### M3500



### M5500, 7500



### M9500



W  
E  
L  
D  
I  
N  
G  
  
A  
C  
C  
E  
S  
S  
O  
R  
I  
E  
S

### Digital Smart Tool



No shop should be without this handy digital level. Accurate to 1/10 of a degree, the Digital Smart Tool runs for about 400 hours on a single 9 volt battery and has an automatic shut off after 6 minutes. Displays degrees, slope % and pitch (in/ft) with arrows to show the direction to move towards level. The display inverts when the tool is moved beyond 90°. Fits into most standard levels with oval slot.

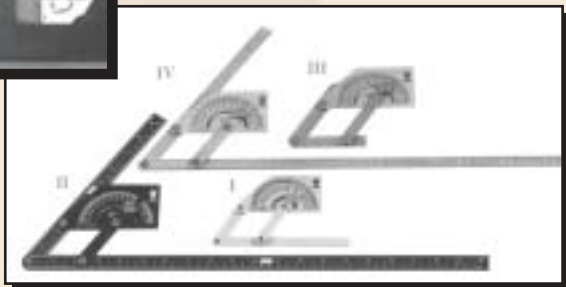
- Digital Smart Tool (module only) ..... \$99.00
- Deluxe Smart Tool (includes 8" alum. rail with magnetic base, shown above) ... \$139.00  
(other lengths available - call for details)

Find any inside or outside angle up to 360°. Choose from four different models.



### Angle Finder

- Angle Finder I (plastic) ..... \$18.95
- Angle Finder II (aluminum w/pouch) .... \$39.95
- Angle Finder III (stainless) ..... \$54.95
- Angle Finder IV (stainless w/pouch) .... \$74.95



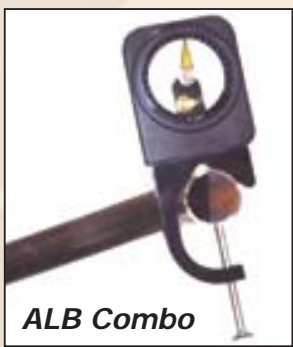
### Angle Level



Clip this nifty tool on your belt for quick and easy angle checking. This is a very high quality tool with lots of features unlike cheaper versions.

- Angle Level I (1/4°) (3" x 2.5") ..... \$32.95
- Angle Level II (1/10°) ..... \$54.95  
(3.6" x 3.1" includes case)
- Angle Level III (1/20°) ..... \$159.95  
(5.5" x 5", die cast housing with carrying case)

### New Product!



**ALB Combo**

Now to compliment our popular Angle Levels we offer two sizes of **Angle Level Base**. These powder-coated steel clamps provide accurate plane of bend tracking on round tubes. Great for chassis or exhaust work!

- ALB (up to 2" tube) ..... \$34.95
- ALB4 (1-1/2" - 4" tube) ..... \$44.95
- Combination Angle Level II with ALB (Save \$10) ..... \$79.90
- Combination Angle Level II with ALB4 (Save \$10) ..... \$89.90

## C-Tech Cabinets

Working with race teams, C-TECH has developed a line of Mobile Work Benches that include features and benefits that put them far ahead of the competition.

Fabricated entirely of heavy gauge sheet aluminum and thick walled extrusions, along with our exclusive aluminum *MotionLatch*™\* drawers, these carts and work benches are lighter weight than others on the market today.

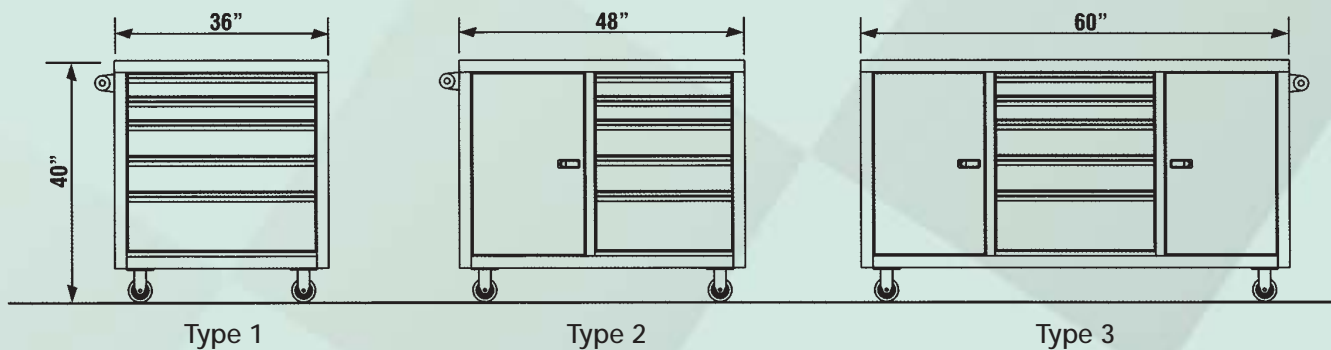
Available in several standard sizes, each cart can be fitted with an array of options to maximize pit efficiency. All of your critical equipment like computer telemetry systems, nitrogen tanks, tools, and spare parts are neatly organized and easily accessible allowing you to be at your competitive best. With radius corners and professional appearance, our carts enhance your team's image.

### Standard Features

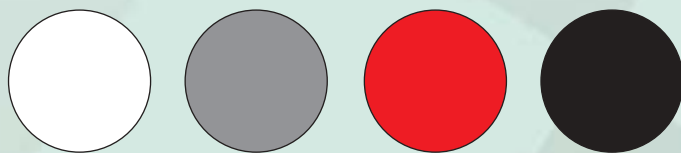
- Lightweight All Aluminum Construction
- Extruded Aluminum Radius Corners
- Heavy Gauge Doors w/Inner Liner
- Full Length Aluminum Hinges
- Lock Down Adjustable Shelves
- Tough Powdercoated Finish
- Exclusive *MotionLatch*™\* drawers



### Mobile Work Benches



### Standard Colors



Custom colors are available at an additional charge. Because of the nature of the inks used to print this brochure and the actual paint pigments the finished colors will vary.

Type 1 (36" with 5 drawers) .....	\$1850.00
Type 2 (48" with 5 drawers, 1 door) .....	\$1995.00
Type 3 (60" with 5 drawers, 2 doors) .....	\$2195.00

## Multitool

*"The Ultimate Finishing Tool"*

New from Van Sant Enterprises is the Multitool belt and disc grinding attachment for your bench grinder. This versatile tool removes material up to 5 times faster than with the equivalent grit grinding wheel. Belts change in seconds from grinding, to sand deburr or polish. Quality construction is backed by a 3-year manufacturer warranty. Includes 1 belt, 1 disc & OSHA approved guards.



Multi Tool Combo Shown

**Multitool Grinder Attachment** (includes miter table)  
Part # MT 362 ..... **\$219.95**

### Combination Special

**JBG-6A Bench Grinder with Multitool Attachment** ..... **\$319.99**  
**JBG-8A Bench Grinder with Multitool Attachment** ..... **\$369.99**

### Multitool Sharpening Fixture

Part # SJIG ..... **\$74.99**

Quickly Sharpens chisels to 50mm, plane blades to 60mm and power plane blades to 82mm to correct angles. Gives a razor sharp edge without burning or the need to hone. Also works great for re-tipping screwdrivers.



### Jet Industrial Bench Grinders

Part # JBG-6A ..... **\$119.00**  
Part # JBG-8A ..... **\$199.00**

These heavy-duty grinders are a perfect match for the Multitool. They have the power to take on continuous commercial use and easily grind, sand or polish without bogging down. Comes with all OSHA required guards for normal use, a 6 foot grounded power cord, and a 2-year manufacturer's warrantee.

Model:	JBG-6A	JBG-8A
Overall Dimensions (LxHxD/in):	18 x 10-1/2 x 8-1/2	19 x 12-1/2 x 10
Wheel Size (DxWxB/in):	6 x 3/4 x 1/2	8 x 1 x 5/8
Motor:	1/2 HP, 1 Ph 115V	1 HP, 1 Ph 115V
Motor (RPM):	3,450	3,450
Wheels Included/Grit:	36/60	36/60
Net Weight (lbs):	32	54



### Portagrind

Portagrind will grind, sand, sharpen, shape, polish, descale, refinish. Suitable for all metals, wood, leather, fibre, plastic, rubber, glass, ceramic. Complete unit powered by high quality 750 watt motor. Includes (1) 100 Grit 3M Belt.

**PG750 Portagrind** ..... **\$199.99**  
**24AZ33M Belt 3 pk. (40/80/120 grit)** ..... **\$9.99**

**Multitool Adaptor Kits and Contact Wheels**

ADP6-BAL	6" Baldor Adaptor	\$18.00
ADP6-DAY	6" Dayton Adaptor	\$10.50
ADP7-WIS	7" Milwaukee/Wilton	\$26.00
ADP8-BAL	8" Baldor Adaptor	\$45.00
ADP8-DAY	8 "Dayton Adaptor	\$20.00
ADP8-10-WIS	8"-10" Milwaukee/Wilton	\$20.00
MTCTWL	3-1/2" Contact Wheel	\$37.50

Multitool fits all popular brands of grinders with screw-on type wheel guards. Multitool is easily fitted to any 6" or 8" bench grinder with 1/3 hp minimum power. Shaft size must be 1/2", 5/8", 3/4" or 14mm diameter. A fitting kit including a universal adaptor with radial slots, to suit grinder's wheel guard mounting holes, and easy to follow instructions are included. Multitool will NOT fit a grinder with heavy cast wheel guards if the guards are used to retain the spindle bearings.



**Multitool 3M Finishing and Polishing Belts**

36BLT0243M	24 Grit Aluminum Zirconia Belt 3 Pk	\$ 21.49
36BLT0403M	40 Grit Aluminum Zirconia Belt 3 Pk	\$ 17.49
36BLT0803M	80 Grit Aluminum Zirconia Belt 3 Pk	\$ 13.99
36BLT1203M	120 Grit Aluminum Zirconia Belt 3 Pk	\$ 13.99
36AZ33M	Aluminum Zirconia Assorted 3 Pk (40, 80, 120)	\$ 14.99
36TZ1200	Trizact 1200 Grit Belt 3 Pk	\$ 19.95
36TZ400	Trizact 400 Grit Belt 3 Pk	\$ 19.95
36TZ220	Trizact 220 Grit Belt 3 Pk	\$ 19.95
36TZA3	Trizact Assorted 3 Pk	\$ 18.95
DSK30403M	7" 40 Grit Cubitron Disc 3 Pk	\$ 14.69
DSK30803M	7" 80 Grit Cubitron Disc 3 Pk	\$ 8.69
DSK31503M	7" 150 Grit Cubitron Disc 3 Pk	\$ 8.69
DSKA33M	7" Assorted Cubitron Disc 3 Pk	\$ 10.49
PC9879	Polishing Rouge Kit 4 Pk	\$ 12.99
36PBLTSF	Talc Polishing Belt	\$ 15.35

*A minimum \$20.00 order applies to belts and accessories.*

**Multitool Abrasive Starter Kit** includes 7" disc assorted 3 pk (40, 80, 150), Trizact belt assorted 3 pk (220, 400, 1200), Aluminum Zirconia belt assorted 3 pk (40, 80, 120), 1 talc polishing belt, and polishing rouge kit.

**Part #MKT362** ..... **\$74.99**

GRINDING & SANDING

## Belt Grinders



These abrasive belt grinders are a great way to do grinding and polishing jobs safely and quickly on all types of material. Automatic tracking control keeps the belt aligned at all times, and can be changed in seconds without the need for tools. A top mounted grinding surface can be accessed for flat operations or the front wheel can be used with the material safety rest. The head even pivots to change the working height or level the surface. Optional dust extractors keep the mess to a minimum. A variety of belts are available in grits from 40 to 220 for any application.

<b>GB0750</b> (3" belt width) .....	<b>\$1,995.00</b>
<b>GB075S</b> (3" belt w/dust extractor) .....	<b>\$2,895.00</b>
<b>GB0100</b> (4" belt width) .....	<b>\$2,195.00</b>
<b>GB010S</b> (4" belt w/dust extractor) .....	<b>\$3,195.00</b>
<b>GB0150</b> (6" belt width) .....	<b>\$2,295.00</b>
<b>GB015S</b> (6" belt w/dust extractor) .....	<b>\$3,495.00</b>

\*Grinders are shipped with a front wheel with a durometer of 70. Wheels are available with durometer from 40 (soft) to 96 (hard).

*photo courtesy of  
Applied Racing Technology*



## Belts and Accessories

Grit	3"	4"	6"
40	\$9.00	\$12.00	\$20.00
60	\$9.00	\$12.00	\$20.00
80	\$15.00	\$15.00	\$20.00
120	\$15.00	\$15.00	\$20.00
180	\$15.00	\$15.00	\$20.00
220	\$15.00	\$15.00	\$20.00

<b>Contact wheel 3"</b> .....	<b>\$200.00</b>
<b>Contact wheel 4"</b> .....	<b>\$250.00</b>
<b>Contact wheel 6"</b> .....	<b>\$300.00</b>



## Hardcore Belt Grinders

These belt grinders are designed with the hardcore fabricator in mind. These precision machines are designed and balanced for vibration free operation. All adjustments are quick and easy with micro adjustments for belt tensioning and tracking control.

<b>BGA-S 2x72 Grinder (1hp)</b> .....	<b>\$995.00</b>
<b>BGA-S 2x72 Grinder (1.5hp)</b> .....	<b>\$1275.00</b>
<b>BGA-V 2x72 Grinder (1.5hp variable speed)</b> .....	<b>\$1875.00</b>
<b>BGP Belt Grinder Pedestal (not included)</b> .....	<b>\$220.00</b>

- 6061 T-6 billet main beam construction.
- Fully adjustable beam work angles.
- Micro-adjustable belt tensioning.
- Micro-adjustable belt tracking control.
- Convenient 1/4 turn belt release lever.
- Design balanced Micro-Vee precision spindle drive system.
- Precision ground & balanced urethane coated contact wheel.
- Contact wheel positive spindle lock.
- Anodized & powder coated finish.



Grinding small contours is easier than ever. Each interchangeable small wheel is supplied with its own precision bearings. Different size contours are achieved by switching to another small wheel, available in various diameters.

**SWA - Small Wheel Attachment** . . . . **\$135.00**

(Shown with 2" Drive & 3/16" Small Wheel)

This attachment has a 2" x 6-1/2" re-surfaceable platen mounted behind the belt for flat grinding. The platen can be removed for slack-belt grinding, and contact grinding can be performed on either the 2" or 5" wheels. The flat platen attachment also accommodates the standard workrest and optional accessories.

**FPA - Flat Platen Attachment** .....

**\$220.00**



(Shown with Large Workrest Table & Miter Attachment)



This attachment was designed to use standard 9" adhesive backed abrasive disks. A wider variety of abrasives is available by using spray adhesive and 9" x 11" wet or dry sanding sheets. Additional disk plates are available for changing grits quickly. The removable work table can be adjusted from 45 to 90 degrees and also accommodates the miter attachment.

**DGA - Disk Grinder Attachment** .....

**\$310.00**



### HardCore Model BGB 6x60

The Model BGB 6-60 utilizes many of the same features as its best selling predecessor, with the advantage of 6" width grinding surface. It comes standard with variable speed motor and material rest.

**BGB-V 6x60 Grinder (1.5hp variable speed)** .....

**\$2395.00**

**New Product!**

## Sheet Metal Brakes



These sheet metal brakes from Boyd-Built are available in 6 and 8 foot models. Both models will bend 18 gauge steel or .090" aluminum. They feature several items as standard equipment that are extra cost options on other brands such as:

- 1" radius bar included
- Cam-Lock design
- Bronze hinge bushings
- Adjustable tension bars
- Adjustable counterweights
- 1/2" steel plate construction

Model	6 foot	8 foot
Mild Steel Capacity	18 gauge (.049")	18 gauge (.049")
Aluminum Capacity	.090"	.090"
Maximum Bend Length	72"	96"
Maximum Beam Lift	1-7/8"	1-7/8"
Beam Adjustment (front to rear)	2"	2"
Minimum Reverse Bend	1/2"	1/2"
Minimum Flange @ Capacity	5/8"	5/8"
Weight	750 lbs.	895 lbs.

<b>6-Foot Sheet Metal Brake</b> .....	<b>\$1,300.00</b>
<b>8-Foot Sheet Metal Brake</b> .....	<b>\$1,800.00</b>
<b>Optional Caster Wheels</b> .....	<b>\$125.00</b>

## Hand Operated Lever Shear

The CMF-16 hand operated lever shear does to steel what scissors do to paper. It cuts straight. It cuts irregular shapes. It can cut long sheets by repeatedly raising and lowering the lever as you feed the material through the machine! It can also cut a "V" shape into the material (not possible with a conventional shear). Due to their unique design, the operator can actually see the cutting line.

- Special table-top surface allows the work to slide easily.
- Hold-Down system does not allow material to move during the cutting cycle.
- Includes two adjustable guides for straight or tapered cutting.
- Length of cutting blade: 43"
- Table top dimensions (LW): 55"x24"
- Overall dimensions (LWH): 108"x30"x44.5"
- Net Weight: 800 Pounds
- Lever is fully counterbalanced
- Cutting Capacity: 16 gauge cold rolled steel
- Cutting blades made in Europe with high quality steels, ensuring long life and clean, consistent cuts
- Does not require complicated maintenance.



<b>CMF-16 Lever Shear</b> .....	<b>\$2650.00</b>
---------------------------------	------------------



## Sheet Metal Machines

Van Sant Enterprises carries a full line of quality National Sheet Metal Machines. These heavy duty units use replaceable bushing at wear points and high chromium blades which withstand wear much better than standard blades. Optional equipment includes digital back gauge or programmable digital back gauge. National makes shears up to 10' ... 1/4" hydraulic and brakes up to 10' ... 14 gauge. We have listed a few models below. Please call for further details.

### Shears



#### SPECIFICATIONS

Model No.	Price	Capacity	Cutting Length
N5216 (Foot Shear)	\$2800.00	16 Ga.	52"
NA5216 (Air)	\$4100.00	16 Ga.	52"
NA5212 (Air)	\$6500.00	12 Ga.	52"
NH5216 (Hyd.)	\$4950.00	16 Ga.	52"
NH5212 (Hyd.)	\$7950.00	12 Ga.	52"
NH5210 (Hyd.)	\$9600.00	10 Ga.	52"
NH4825 (Hyd.)	\$14,950.00	1/4"	48"
NH7225 (Hyd.)	\$18,950.00	1/4"	72"
NH12036 (Hyd.)	\$35,500.00	3/16"	121"

#### SPECIFICATIONS - HAND BRAKES

Model No.	Price	Bending Length	Gauge Capacity
S4816 *	\$995.00	48-1/4"	16
N4812	\$2895.00	49"	12
N7212	\$3325.00	73"	12
N9616	\$2990.00	97"	16
N9614	\$3400.00	97"	14
N12016	\$4400.00	121"	16
N12014	\$4895.00	121"	14

### Brakes



#### SPECIFICATIONS - BOX & PAN BRAKES

Model No.	Price	Bending Length	Gauge Capacity
U4816 *	\$1095.00	48-1/4"	16
U4812	\$2950.00	49"	12
U7216	\$3595.00	73"	16
U7212	\$3990.00	73"	12
U9616	\$4450.00	97"	16

\* Bench top model floor stand available ..... \$175.00



photo courtesy of Bourgets Bike Works



### ProLine Planishing Hammers

This portable planishing hammer is designed for forming or planishing light gauge sheetmetal. The yoke is 22" tall and 12-3/8" from the bottom die to the bottom of the yoke. It comes with one top die and one each 3", 12" and 36" radii bottom die, a die extraction tool, oil and special oil bottle, stainless steel engraved die rack with grommets, regulator and cast aluminum yoke (shown below) to convert the head to a hand-held unit. The frame is powder coated. The unit is shipped with some assembly required.

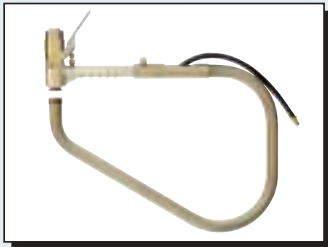
**Portable Model** ..... \$2850.00

The lower arm on these cast iron floor models can be lowered to accommodate an optional bottom anvil for deep parts. Other special anvils are available, which allow the operator to move the lower arm off-center without losing position. They feature heavy duty pneumatic motors and sturdy cast iron frames.

**24" Floor Model** ..... \$5500.00

**36" Floor Model** ..... \$7500.00

(Shown with optional die rack)

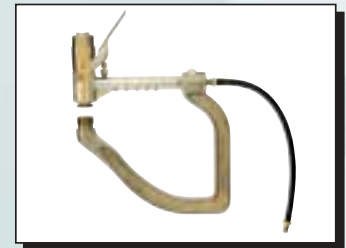


This hand-held unit with the optional PPHH-5110 tubular yoke is 16" tall x 22-3/4" deep. It comes with one top die and one each 3", 12" and 36" radii bottom die, a die extraction tool, oil and special oil bottle.

**Hand-Held Unit (with tubular yoke)** ..... \$1695.00

This hand-held unit with a cast aluminum yoke PPHH-4021 is the same yoke that is included with the portable hammer kit. It is 10-1/2" tall x 11-1/2" deep. It comes with one top die and one each 3", 12" and 36" radii bottom die, a die extraction tool, oil and special oil bottle.

**Hand-Held Unit (with cast aluminum yoke)** ..... \$1595.00



### Stierli Horizontal Press Benders

Stierli Bender is a highly productive versatile and yet compact horizontal bending and straightening machine. This machine works in a variety of applications with simple and rapid tool interchange. The large and spacious work platform gives maximum stability for ease of bending larger components, and the unit is stable while remaining mobile.

**85 SB Bender (220v 3ph)** ..... \$7,800.00

*Larger models available - Call for details!*

#### Specifications

Working Power	Tool Height	Adjustable Stroke	Bending Output Flat	Ram Speed	Motor Power	Weight
9.5 Tons	4"	0-4 3/4"	4"x3/8"	40"/Min	1.5 HP	530 lbs.



## Pneumatic Press Brakes

Atek's press brakes offer versatility and economy. They perform numerous prototyping and production press brake functions including bending, flanging, hemming, flattening, staking, box forming and more.



- Adjustable Stroke Depth Control
- Adjustable Die Space
- Ram Speed Control
- Variable Tonnage Control
- Fully Pneumatic

### 12 Ton Models

B212 Press Brake (12 Ton x 2 Ft. Bed)	\$4,350.00
B412 Press Brake (12 Ton x 4 Ft. Bed)	\$5,320.00
B512 Press Brake (12 Ton x 5 Ft. Bed)	\$6,200.00
BST200 Floor Stand (2 Ft.)	\$310.00
BST400 Floor Stand (4 Ft.)	\$395.00
BST500 Floor Stand (5 Ft.)	\$440.00

### 24 Ton Models

B224 Press Brake (24 Ton x 2 Ft. Bed)	\$8,250.00
B424 Press Brake (24 Ton x 4 Ft. Bed)	\$9,570.00
B624 Press Brake (24 Ton x 6 Ft. Bed)	\$10,420.00
B824 Press Brake (24 Ton x 8 Ft. Bed)	\$13,780.00
BST224 Floor Stand (2 Ft.)	\$595.00
BST424 Floor Stand (4 Ft.)	\$675.00
BST624 Floor Stand (6 Ft.)	\$885.00
BST824 Floor Stand (8 Ft.)	\$1,050.00

#### 12 Ton Model Specifications

Model	Bed Width* (ft)	Ram Height (in)	Max. Back Depth (in)	Max. Free Air	Max. Speed @ Full Stroke	Shipping Weight* (lbs)
B 212	2	5 - 7/8	18 (See Note)	2.2 Ft³	30 SPM	940
B 412	4	9 - 7/8				1340
B 512	5	13 - 7/8				1705

Note: Maximum back gauge depth is reduced by 2 inches when equipped with micro-adjustable gauge options.  
\*12 ton, 100 lbs less without floor stand. Note: Width between housings, add 1/4".

#### 24 Ton Model Specifications

Model	Bed Width* (ft)	Ram Height (in)	Max. Back Depth (in)	Max. Free Air	Max. Speed @ Full Stroke	Shipping Weight* (lbs)
B 224	2	8	19 / 21 - 1/2 (See Note)	4.4 Ft³	20 SPM	2025
B 424	4	13				2835
B 624	6	17 - 1/2				3850
B 824	8	21 - 1/4				5100

Note: Full 21-1/2" back gauge depth possible only on sheets 7" narrower than maximum width. Maximum back gauge depth is reduced by 2 inches when equipped with micro-adjustable gauge options.  
\*24 ton, 150 to 250 lbs less without floor stand. Note: Width between housings, add 1/4".

## Sheet Metal Cutters



Slugger sheet metal cutters easily outperform standard hole saws by cutting a more accurate hole up to three times faster with far superior tool life. These precision ground cutters can be used in a hand drill or drill press and will leave a smooth finish with minimal material deformation. Their 1/4" depth of cut keeps vibration and distortion to a minimum. Sizes are available individually from 3/8" to 3" OD. Contact us for applications not listed.

- Kit # SMS000** ..... \$69.95  
(includes sizes 5/16, 3/8, 7/16, 1/2, 9/16, 5/8, 3/4 with arbor, pilot pin, and carrying case)
- Kit # SM000** ..... \$129.95  
(includes sizes 7/8, 1-1/8, 1-3/8, 1-3/4, 2, 2-1/2 with two arbors, and carrying case)
- SMS002 Arbor** (Fits 5/16" - 13/16" cutters) ..... \$28.00
- SMS003 Pilot Pin** (For SMS002 Arbor) ..... \$4.50
- 18255 Arbor** (Fits 7/8" - 1 5/16" cutters) ..... \$36.00
- 18245 Arbor** (Fits 1 3/8" - 3" cutters) ..... \$42.00
- 16044 1/4" Pilot Drill** (Fits 18125 & 18245 arbors) ..... \$4.50

Diam.	Decimal	Part #	Price
5/16	0.3125	SMS312	\$7.00
11/32	0.3438	SMS343	\$7.00
3/8	0.3750	SMS375	\$7.00
13/32	0.4062	SMS406	\$8.70
27/64	0.4219	SMS421	\$8.70
7/16	0.4375	SMS437	\$8.70
15/32	0.4688	SMS468	\$9.20
1/2	0.5000	SMS500	\$9.20
17/32	0.5312	SMS531	\$10.00
9/16	0.5625	SMS562	\$10.00
5/8	0.6250	SMS625	\$10.50
11/16	0.6875	SMS687	\$12.00
23/32	0.7188	SMS718	\$12.00
3/4	0.7500	SMS750	\$12.00
13/16	0.8125	SM812	\$13.00
7/8	0.8750	SM875	\$13.50
15/16	0.9375	SM937	\$13.50
1	1.0000	SM100	\$13.50
1-1/16	1.0625	SM106	\$13.50
1-1/8	1.1250	SM112	\$14.50
1-3/16	1.1875	SM119	\$16.00
1-1/4	1.2500	SM125	\$16.00
1-5/16	1.3125	SM131	\$16.00
1-3/8	1.3750	SM137	\$16.00
1-7/16	1.4375	SM143	\$16.00
1-1/2	1.5000	SM150	\$16.00
1-9/16	1.5625	SM156	\$16.00

Diam.	Decimal	Part #	Price
1-5/8	1.6250	SM162	\$16.00
1-11/16	1.6875	SM167	\$16.00
1-3/4	1.7500	SM175	\$17.50
1-13/16	1.8125	SM181	\$17.50
1-7/8	1.8750	SM187	\$17.50
2	2.0000	SM200	\$17.50
2-1/16	2.0625	SM206	\$22.00
2-1/8	2.1250	SM212	\$22.00
2-1/4	2.2500	SM225	\$22.00
2-5/16	2.3125	SM231	\$22.00
2-3/8	2.3750	SM237	\$22.00
2-1/2	2.5000	SM250	\$24.00
2-3/4	2.7500	SM275	\$30.00
3	3.0000	SM300	\$30.00
8 mm	0.3149	SMS314	\$7.00
9 mm	0.3543	SMS354	\$7.00
10 mm	0.3937	SMS393	\$7.00
11 mm	0.4330	SMS433	\$8.70
12 mm	0.4724	SMS472	\$8.70
13 mm	0.5118	SMS511	\$8.70
14 mm	0.5518	SMS551	\$9.20
15 mm	0.5905	SMS590	\$9.20
16 mm	0.6299	SMS629	\$11.00
17 mm	0.6692	SMS669	\$11.00
18 mm	0.7086	SMS708	\$12.00
19 mm	0.7480	SMS748	\$12.00



### Bead Form Tools

Bead Form quickly forms hose beads on all types of tubing. Positive action gear drive and 8620 steel form rollers make this tool very durable. It works on steel, aluminum, copper, or brass up to .050" wall thickness. The hand crank can be removed and replaced with a ratchet and 1/4" square socket. Can be vice or bench mounted with the included bracket and even comes with a handy carrying case. Great for fuel and radiator lines.

- Bead Form Jr.** (5/16" - 1/2" OD) is designed for .028 wall tubing.  
(Produces a bead approx. .025" tall) ..... **\$469.00**
- Bead Form I** (5/8" - 2" OD) (Produces a bead approx. .050" tall x .185" wide) ..... **\$399.00**
- Bead Form II** (1-1/2" - 4" OD) (Produces a bead approx. .080" tall x .270" wide) ..... **\$399.00**
- Call us about the New Electric Model** ..... **P.O.R.**

### New Product!

- 3 roller bead forming set for multiple bead and tube sizes.
- Designed for up to .065" wall steel tubing.
- A bead height of approximately .080" is produced on 1-1/2" thru 6" diameter tubing.

**Bead Form Boss** ..... **\$849.00**

- Roller set for Pexto 622 machine.
- 3 roller set with protective end cap.
- For tubing and sheet metal
- Heat treated and zinc plated rollers.

**Bead Roller Set** ..... **\$149.00**



... ALSO  
**Bead Form Electric**  
**Call For Details.**

### De-Burring Machine



This rugged bench top machine uses HSS blades in two cutter stations to de-burr the inside and outside ends of tubing for end forming and mandrel bending applications. The RE 642 has capacity from 1/4" to 1-5/8" OD with other models available. Blades can be removed and sharpened easily.

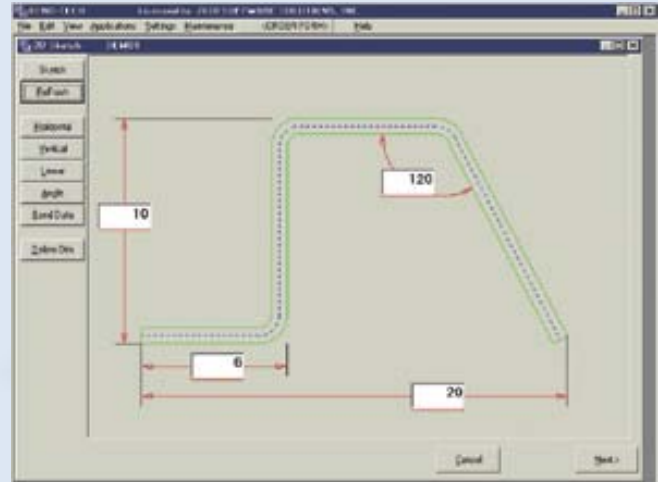
**RE642** (220 3ph) ..... **\$2295.00**

B  
E  
A  
D  
F  
O  
R  
M  
T  
O  
O  
L  
S

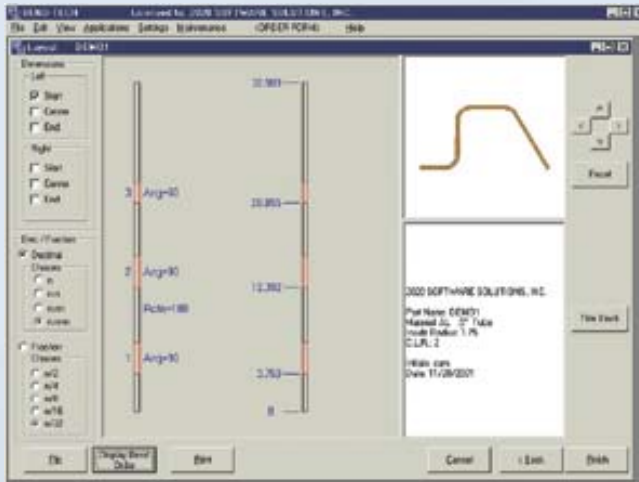
## Bend-Tech Tube Bending Design & Layout Software

- Just draw a rough sketch of your part and give it dimensions from any point
- Bend angles calculated from dimensions given (optional x, y, z input)
- Save time and money over manual calculations or trial and error methods
- Use any center line or inside radius dimension
- Adjustable for material differences and springback
- Rotate sections to create a true 3D part
- Create your own material database
- Parts are saved with a graphic for faster identification and retrieval
- Video help functions are simple to follow (learn BEND-TECH in 30 minutes)

**New Product!**



### Calculate and Create Bend Data Sheets for any Part



- 3D shaded model can be rotated dynamically
- Create prints for all your parts
- Bend sheet shows cut length, bending locations, rotation and material
- Dimension; start of bend, end of bend & center of bend, from either direction
- Dimension with decimals or fractions to user-defined tolerances
- Preferences; Colors, Text Sizes & Arrow Sizes are Saved in User Definable Data Bases
- **Demo** will be fully functional for the first 6 uses and then will omit output figures until registered

Bend-Tech Tube Bending Design & Layout Software ..... \$295.00

*For a free demo copy  
or for more information  
about BEND-TECH  
go to  
[www.trick-tools.com](http://www.trick-tools.com)  
or Call*



*photo courtesy of Soenen Motor Sports*

## HB1 Hand Bending Machine

Introducing the HB1 Hand Bending Machine for up to 5/8" OD tubing. The HB1 features heavy duty steel construction for bending custom fuel, brake or hydraulic lines or even small diameter chassis tubing. Quick setup and simple operation make this bender the right choice for light production, repair, and prototype work. Each standard die set is reversible for bending three-times or five-times the diameter of the tube radii and the adjustable bend die allows for easy repositioning and removal of the tube. The HB1 hand bender produces quality bends in a variety of materials, and wall thicknesses with the flexibility required for any project.

- Rugged CNC machined steel construction
- Replaceable parts for long service life
- 3D and 5D bends from each die set\*
- Adjustable bend die on lead screw
- Close bend-to-bend distances
- Simple set up and operation
- Pedestal or vice mount
- Custom dies available

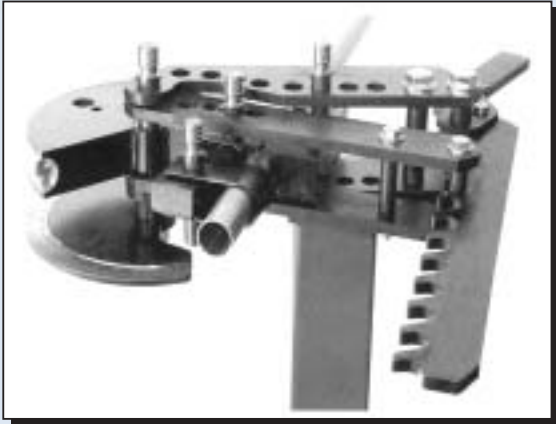


*Shown with optional floor pedestal*

Part #	Description	Price
VS250	1/4" OD x .75" & 1.25" CLR die set	\$43.52
VS312	5/16" OD x .93" & 1.56" CLR die set	\$53.86
VS375	3/8" OD x 1.12" & 1.87" CLR die set	\$57.32
VS500	1/2" OD x 1.5" & 2.5" CLR die set	\$81.54
VS625	5/8" OD x 1.87" & 3.12" CLR die set	\$88.56
HB1	Hand Bender assy	\$391.46
HB1KIT	<b>Hand Bender Kit, includes bender and 5 die sets</b>	<b>\$679.00 SAVE!!!</b>
HBPED	Hand Bender Pedstal with die rack	\$139.95
	Custom die set (single)	\$145.50
	Custom die set (pair)	\$231.00

*Dealer Inquiries Welcome*

## Model 3 Bender



Manual bending with optional degree ring kit.



Shown with hydraulic adapter kit and cylinder.



Shown with degree ring and pointer.

### Features

- Large 2" Capacity
- Mechanical or Hydraulic
- Accurate Bends To 180°
- Round & Square Tubing
- Easy Operation
- Affordable

The **Original** Model 3 Bender is designed for the professional fabricator or hobbyist who requires a dependable, accurate and affordable tube and pipe bender. This machine can bend from 1/2" to 2" OD tubing manually, because of the compound leverage from the ratcheting arm, and can be upgraded to hydraulic at any time. (For manual operation the Model 3 must be solidly attached to a fixture such as our Floor Pedestal) The Model 3's excellent bend quality is guaranteed to be as good or better than any bender on the market in the \$3,000 and under range. The Model 3 is the #1 selling bender in the USA to racecar fabricators. Die sets sold separately.

### Benders & Kits:

<b>New Product!</b> Deluxe Model 3 Bender Kit - Save! Includes Model 3 Bender with degree ring, floor pedestal, magnetic base pointer, and CNC machined handle	\$399.95
Model 3 Bender w/Degree Ring	\$266.50
Model 3 Bender	\$235.00
Model 3 Air/Hydraulic Package (includes hydraulic adapter kit, cylinder, hose, and 10,000 psi air/hydraulic pump)	\$940.50
Model 3 Electric/Hydraulic Package (includes hydraulic adapter kit, cylinder, hose, and 5,000 psi elec/hydraulic pump with hand switch)	\$1440.50





**Parts and Accessories:**

**New Product!** Model 3 CNC Machined Handle (not included) (Powder coated, machined grip, precise fit for manual bending) ..... \$26.95

Model 3 Bender Degree Ring Kit ..... \$95.00

Magnetic Base Degree Ring Pointer (not included) ..... \$19.95

Model 3 Bender Floor Pedestal ..... \$98.00

Model 3 Bender Hydraulic Adapter Kit (includes cylinder yoke, mounting block & instructions) ..... \$85.00

10 Ton Hydraulic Cylinder (14" stroke, industrial quality) ..... \$388.00

Air / Hydraulic Pump (10,000 PSI, foot pedal operation) ..... \$395.00

2 HP Electric Pump with hand jog switch (5,000 PSI) ..... \$895.00

Hydraulic Pump Hose with quick disconnect fitting ..... \$72.50

**Round, Square, and Nominal Pipe Die Sets:**

**Model 3 Die Sets:** Listed below are our most popular Model 3 Bender die sets. If you do not see the die set that you require, such as metric sized dies, different radii, or Delrin followers for aluminum or stainless, please contact our sales staff for a recommendation or quote. All dies will bend up to a full U-bend of 180°. **Min. Wall** denotes the minimum recommended wall thickness for consistent high quality wrinkle free bends at the radius specified. **CLR** stands for "Center Line Radius", meaning the bend radius as measured from the center rotation point of the die to the middle of the tubing. **Materials such as chrome moly or stainless may require special consideration.**

**ROUND TUBE DIE SETS**

O.D.	Min. Wall	CLR	Price
1/2"	.058"	2.25"	\$105
1/2"	.049"	3"	\$115
5/8"	.058"	2.25"	\$105
5/8"	.049"	3"	\$115
3/4"	.058"	2.25"	\$105
3/4"	.058"	3"	\$115
3/4"	.049"	4.5"	\$165
7/8"	.058"	3"	\$125
7/8"	.049"	4.5"	\$165
1"	.058"	3"	\$135
1"	.058"	3.5"	\$165
1"	.058"	4.5"	\$165
1-1/8"	.083"	3.5"	\$165
1-1/8"	.058"	4.5"	\$165
1-1/4"	.083"	3.5"	\$165
1-1/4"	.058"	4.5"	\$165
1-1/4"	.058"	5.5"	\$195
1-3/8"	.095"	4.5"	\$175
1-3/8"	.083"	5.5"	\$185
1-3/8"	.058"	6.5"	\$195
1-1/2"	.095"	4.5"	\$185

**ROUND TUBE DIE SETS (cont.)**

O.D.	Min. Wall	CLR	Price
1-1/2"	.083"	5.5"	\$195
1-1/2"	.058"	6.5"	\$200
1-5/8"	.083"	5.5"	\$200
1-5/8"	.083"	6.5"	\$205
1-3/4"	.095"	5.5"	\$200
1-3/4"	.083"	6.5"	\$205
1-7/8"	.095"	6.5"	\$215
2"	.095"	6.5"	\$225

**SQUARE TUBE DIE SETS**

O.D.	Min. Wall	CLR	Price
1/2"	.065"	3"	\$155
1/2"	.049"	4.5"	\$195
3/4"	.065"	3"	\$155
3/4"	.065"	3.5"	\$165
3/4"	.058"	4.5"	\$195
1"	.083"	3.5"	\$175
1"	.065"	4.5"	\$205
1"	.065"	5.5"	\$215
1"	.065"	6.5"	\$215
1-1/4"	.065"	4.5"	\$205

**SQUARE TUBE DIE SETS (cont.)**

O.D.	Min. Wall	CLR	Price
1-1/4"	.065"	5.5"	\$215
1-1/4"	.065"	6.5"	\$215
1-1/2"	.083"	5.5"	\$215
1-1/2"	.065"	6.5"	\$225

**PIPE DIE SETS (SCH. 40)**

Size	O.D.	CLR	Price
1/2"	.840"	3"	\$135
3/4"	1.050"	3"	\$135
3/4"	1.050"	3.5"	\$165
3/4"		4.5"	\$165
1"	1.315"	3.5"	\$165
1"		4.5"	\$175
1"		5.5"	\$195
1"		6.5"	\$205
1-1/4"	1.660"	4.5"	\$195
1-1/4"		5.5"	\$200
1-1/4"		6.5"	\$205
1-1/2"	1.900"	5.5"	\$205
1-1/2"		6.5"	\$215



## Model 4 Bender

### Features

- Easy Setup and Operation
- Hydraulic Powered
- Self Locking Ratchet. Prevents Material Springback.
- Large Radius Degree Wheel
- Quick Change Dies.
- High Bending Torque Over 60,000 in./lbs.
- Capacity Up to 2-1/2"
- Durable Heavy Duty Steel Construction
- Semi-Hossfeld Compatible

The Model 4 bends up to 2" Schedule 40 Pipe, 2-1/2" outside diameter round tubing, solid hot rolled steel to 1-1/2" (38 mm) diameter, flats up to 3" (75 mm) wide x 3/4" (18 mm) thick hot rolled steel. It weighs 170 lbs. with the hydraulic cylinder. All links and frame are precision CNC machined from 3/4" and 1" thick steel. All pins are high strength steel.

The Model 4 employs a 10 ton single acting spring return cylinder with a stroke of 14". It will bend 90 degrees in less than two complete strokes and 180 bends typically require only three strokes.

<b>Model 4 Bender</b> (Die sets sold separately) . . . . .	<b>\$1045.00</b>
<b>2 HP Electric Pump</b> (5,000 P.S.I.) . . . . .	<b>\$895.00</b>
<b>Air / Hydraulic Pump</b> (10,000 P.S.I.) . . . . .	<b>\$395.00</b>
<b>Pump Hose</b> (5,000 P.S.I.) with quick disconnect fitting . .	<b>\$72.50</b>
<b>Bender Stand</b> . . . . .	<b>\$135.00</b>



*Anti-Springback Lever*

**MODEL 4 DIE SETS:** Listed are our most popular Model 4 Bender die sets. Custom dies can also be machined as special orders. If you do not see the die set that you require, such as metric sized dies, please call our sales staff for a recommendation or quote. All dies will bend up to a full U-bend of 180°. **Min. Wall** denotes the minimum recommended wall thickness for consistent high quality wrinkle free bends at the radius specified. **CLR** stands for "Center Line Radius", meaning the bend radius as measured from the center rotation point of the die to the middle of the tubing.

ROUND TUBE DIE SETS			
O.D.	Min. Wall	CLR	Price
1/2"	.058"	2.25"	\$105
5/8"	.058"	2.25"	\$105
3/4"	.058"	2.25"	\$105
3/4"	.058"	3"	\$115
7/8"	.058"	3"	\$125
1"	.058"	3"	\$135
1"	.058"	3.5"	\$165
1"	.058"	4.5"	\$165
1-1/8"	.083"	3.5"	\$165
1-1/8"	.058"	4.5"	\$165
1-1/4"	.083"	3.5"	\$165
1-1/4"	.058"	4.5"	\$165
1-1/4"	.058"	5.5"	\$195
1-3/8"	.095"	4.5"	\$175
1-3/8"	.083"	5.5"	\$185
1-3/8"	.058"	6.5"	\$195
1-1/2"	.095"	4.5"	\$185
1-1/2"	.083"	5.5"	\$195
1-1/2"	.058"	6.5"	\$200

ROUND TUBE DIE SETS (cont.)			
O.D.	Min. Wall	CLR	Price
1-5/8"	.083"	5.5"	\$200
1-5/8"	.083"	6.5"	\$205
1-3/4"	.095"	5.5"	\$200
1-3/4"	.083"	6.5"	\$205
1-7/8"	.095"	6.5"	\$215
2"	.095"	6.5"	\$245
2-1/4"	.120"	6.5"	\$475
2-1/2"	.120"	6.5"	\$475

SQUARE TUBE DIE SETS			
O.D.	Min. Wall	CLR	Price
1/2"	.065"	3"	\$155
1/2"	.049"	4.5"	\$195
3/4"	.065"	3"	\$155
3/4"	.065"	3.5"	\$165
3/4"	.058"	4.5"	\$195
1"	.083"	3.5"	\$175
1"	.065"	4.5"	\$205
1-1/4"	.065"	4.5"	\$215

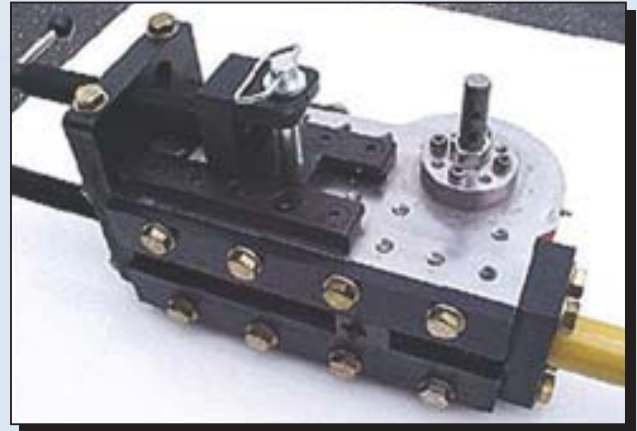
SQUARE TUBE DIE SETS (cont.)			
O.D.	Min. Wall	CLR	Price
1-1/4"	.065"	5.5"	\$235
1-1/2"	.083"	5.5"	\$235
1-1/2"	.065"	6.5"	\$245
1-3/4"	.083"	6.5"	\$305

PIPE DIE SETS (SCH. 40)			
Size	O.D.	CLR	Price
1/2"	.840"	3"	\$135
3/4"	1.050"	3"	\$135
3/4"		4.5"	\$175
1"	1.315"	3.5"	\$165
1"		4.5"	\$185
1-1/4"	1.660"	3.5"	\$190
1-1/4"		4.5"	\$195
1-1/4"		5.5"	\$200
1-1/4"		6.5"	\$205
1-1/2"	1.900"	5.5"	\$205
1-1/2"		6.5"	\$215
2"		6.5"	\$325

## Model 6 Bender

### Features

- Affordable
- Hydraulic Operation
- 180° Single Shot Bends
- Quick Change Dies
- Operator Friendly & Easy Setup
- High Bending Torque, Over 60,000 in./lbs.
- Capacity Up to 2-1/2"
- Adjustable Bend Stop for Repeatability
- Durable Heavy Duty Steel Construction
- Versatile - Easily Customizable



The Model 6 Bender is a hydraulically powered rotary bender capable of producing 180 single shot bends. It's powerful enough to bend up to 2" schedule 40 pipe. The Model 6 Bender's all steel CNC machined construction, 300 lb. empty weight and large bearings insure maximum durability and reliability. It features two degree of bend indicators and an adjustable bend stop for repeatable bending.

- Model 6 Bender (Die sets sold separately) . . . . . \$2950.00
- 2 HP Electric Pump (5,000 P.S.I.) . . . . . \$895.00
- Air / Hydraulic Pump (10,000 P.S.I.) . . . . . \$395.00
- 1/2 HP Electric Enerpac Pump (10,000 P.S.I.) . . . \$1068.00
- 1-1/8 HP Electric Enerpac Pump (10,000 P.S.I.) . \$2006.00
- Pump Hose with quick disconnect fitting . . . . . \$72.50



**MODEL 6 DIE SETS:** Listed below are some of our most popular Model 6 Bender die sets. All die sets are capable of 180° bends. If you need a custom die set or do not see the die set that you require, such as metric sized dies, please call our sales staff.

ROUND TUBE DIE SETS			
O.D.	Min. Wall	CLR	Price
1/2"	.058"	2.25"	\$185
5/8"	.058"	2.25"	\$185
3/4"	.058"	2.25"	\$185
3/4"	.058"	3"	\$205
7/8"	.058"	3"	\$210
1"	.058"	3.5"	\$245
1"	.058"	4.5"	\$265
1-1/8"	.083"	3.5"	\$245
1-1/8"	.058"	4.5"	\$265
1-1/4"	.083"	3.5"	\$245
1-1/4"	.058"	4.5"	\$265
1-1/4"	.058"	5.5"	\$275
1-3/8"	.095"	4.5"	\$295
1-3/8"	.083"	5.5"	\$345
1-1/2"	.095"	4.5"	\$295
1-1/2"	.083"	5.5"	\$345
1-1/2"	.058"	6.5"	\$355
1-5/8"	.109"	4.5"	\$295
1-5/8"	.083"	5.5"	\$350
1-5/8"	.083"	6.5"	\$355

ROUND TUBE DIE SETS (cont.)			
O.D.	Min. Wall	CLR	Price
1-3/4"	.095"	5.5"	\$345
1-3/4"	.083"	6.5"	\$375
1-7/8"	.095"	6.5"	\$400
2"	.095"	6.5"	\$425
2-1/4"	.120"	6.5"	\$625
2-1/2"	.120"	6.5"	\$650

SQUARE TUBE DIE SETS			
O.D.	Min. Wall	CLR	Price
1/2"	.065"	3"	\$235
3/4"	.065"	3.5"	\$265
1"	.083"	3.5"	\$275
1"	.065"	4.5"	\$305
1-1/4"	.065"	4.5"	\$305
1-1/4"	.065"	5.5"	\$315
1-1/2"	.083"	5.5"	\$345
1-1/2"	.065"	6.5"	\$365

PIPE DIE SETS (SCH. 40)			
Size	O.D.	CLR	Price
1/2"	.840"	2.25"	\$200
1/2"		3."	\$235
3/4"	1.050"	3."	\$235
3/4"		3.5"	\$255
3/4"		4.5"	\$265
1"	1.315"	3."	\$245
1"		3.5"	\$255
1"		4.5"	\$265
1-1/4"	1.660"	3."	\$275
1-1/4"		4."	\$280
1-1/4"		4.5"	\$285
1-1/4"		5.5"	\$295
1-1/2"	1.900"	4.5"	\$305
1-1/2"		5.5"	\$325
1-1/2"		6.5"	\$365
2"		6.5"	\$450



## Roll Bending Machines

These machines are used for bending tube, angle, or shapes into coils, circles or large arcs using a wide variety of materials. Simply adjusting the third roll changes the size of the arc or circle. A digital read out allows repeatability for production runs. Machines come complete with a universal roll set. Tube sizes require specific rolls for each O.D. We have rolls for any application including CNC controlled. Please call for special applications.

### CP30P



### Z302P



- **Lower Rolls Knurled** for optimal traction
- **Manual or Hydraulic** adjustment of top roll
- **Rugged Frame** and Heavy Duty Wide Base
- **Hardened Steel Shafts**
- **Horizontal or Vertical operation** options
- Drive Components **supported in Roller Bearings**
- **Heavy Duty** adjustable lateral material guides
- **Compact, Low Maintenance Design**
- **Hardened Universal Standard Rolls**
- **Motor Overload Protection**

Model	Display	Motor	Speed	Weight
CP20	LED	.44 hp	10	240
Z302	Scale	1 hp	8	450
CP30	LED	1.25 hp	10.5	550

Capacity	Tube	Square	Solid	Angle
CP20	1-1/4"x.065	3/4"x.065	1/2"	3/4"x1/8"
Z302	2-3/8"x.065	1-1/2"x.120"	1-1/2"	1-1/2"x3/16"
CP30	2-3/8"x.065	1-1/2"x.120"	1-1/2"	1-1/2"x3/16"

CP20 (Bench top model, manual adjustment w/LED, 220v 3ph) . . . . .	\$2,620.00
CP20-2V (Same as CP20 with two speeds) . . . . .	\$3,120.00
CPS20 (Hydraulic positioning with LED, Auto 9 position repeat, 220 3ph) . . . . .	\$6,720.00
Z302-E (Includes stand, manual adjustment with scale, 220 3ph) . . . . .	\$3,600.00
Z302-P (Same as Z302-E with foot pedal control, add \$100 for 1ph) . . . . .	\$3,900.00
CP30 (Includes stand, manual adjustment w/LED, 220v 3ph) . . . . .	\$4,100.00
CP30-P (Same as CP30 with foot pedal control, add \$150 for single phase) . . . . .	\$4,900.00
CP30-R (CP30-P + rotating head design for hor/vert operation) . . . . .	\$5,290.00

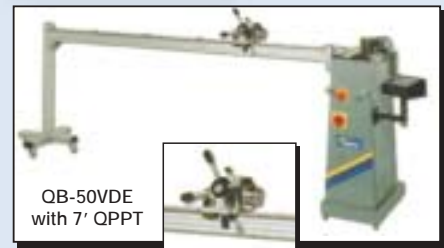
**Larger Models Available • Call For Pricing**

## Ineco Tubing Benders

Ineco QB50 and QB76 rotary-draw models feature portability, quick-change tooling and user-friendly programming for bending round, square, rectangular tube, and profiles or special shapes. Bending angles and springback factors are fully programmable and monitored through the control panel, which may be run in manual, step-by-step, or full automatic mode. In addition, automatic positioning of the counterbend die is featured on VDE models. Up to 25 separate programs may be stored, with 10 sequential bends each. The QB50 has a maximum capacity of 2" OD with bend radii from 3/8" to 8-3/4" CLR, while the maximum capacity of the QB76 is up to 3" OD with bend radii up to 15-3/4" CLR. Bending speed for the QB76 model is 18 seconds for 180°, the QB50 model requires only 7 seconds for 180°. Bending speed is variable withing the PLC control, allowing the operator to set optimal speed for various materials. An electronic overload device automatically protects the mechanical system from possible damage by over-sized material and/or excessive speed. Available in single phase, or three phase with multiple voltage settings, these low maintenance machines require only lubrication of the counterbend die.



Type	QB50	QB76
Max. Capacity	2"x.125"	3"x.125"
Max. Section Modulus	.300 in <sup>3</sup>	.839 in <sup>3</sup>
Max. Radius	8-3/4"	15-3/4"
90° Bend Speed (sec.)	3.5	9
Bending Motor-HP	2 HP	3 HP
Bending Angle Max.	195°	195°
Bending Direction	left	left
Program Memory	25/10	25/10
Length (machine base)	26"	30"
Width x Height	14"x39"	18"x36"
Weight (lbs.)	375	500



QB-50VDE with 7' QPPT  
The QPPT positioning device, available in various lengths from 7' to 20', allows accurate positioning of each bend in its corresponding plane as well as distance between bends.

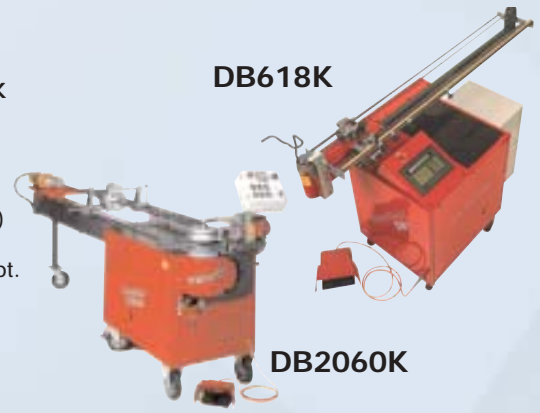
## Ineco Basic

The Ineco Basic rotary draw bender features portability, quick change tooling and user friendly programming for bending round and square tube or special shapes and profiles. Bend angles are digitally programed and monitored with the solid state touch pad controller and inverter drive. This compact unit boasts the same 2" capacity as the Ineco QB50, with bend radii of 3/8" to 8-3/4". Six speed settings bend 90 degrees in as little as 4.5 seconds.

- **2" OD Capacity** - .120" wall mild steel or 1.5" schedule 40 pipe
- **Electronic Control** - Bend angle and zero position are programmable and monitored by a micro processor
- **Overload Protection** - Provided by electronic inverter drive
- **Quick Change Tooling** - Drop on die sets change in seconds
- **Low Maintenance** - Sealed planetary drive unit means no mess and no regular maintenance required
- **Affordable** at \$7750.00. Lease for as low as \$199.00 mo.



Type	DB618K	DB628K	DB648K	DB2060K
Max. Capacity	3/4"x.072"	1-1/4"x.072"	2"x.120"	3"x.109"
Max. Section Modulus	.018 in <sup>3</sup>	.091 in <sup>3</sup>	.305 in <sup>3</sup>	1.037 in <sup>3</sup>
Radii Range	3/8" - 1-1/2"	3/8" - 3-3/8"	3/4" - 5"	3/4" - 7"
90° Bending Speed (sec.)	2	3.5	8	8
Motor - HP (kW)	1 HP (.75)	2 HP (1.5)	3 HP (2.2)	4 HP (3.0)
Bending Angle Max.	190°	190°	190°	190°
Bending Direction	right	right	right	right/left opt.
Program Memory (bends)	1-4	1-4	1-4	1-4
Length (plus arbor)	36"	36"	44"	44"
Width	31"	32"	36"	36"
Height	48"	48"	51"	51"
Weight (lbs.)	441	992	1764	2205



Transfluid's "K" Series offers economic yet powerful machines for moderate production or where space and mobility is a concern. With hydraulic clamping and programmable digital bend angle, these compact machines will hold accuracy of 0.1 degree. Bending capabilities down to 1.5D, quick-change tools, and various positioning options provide the utmost versatility. Available options are Automatic Bend Sequence, Plane of Bend Device with Chuck, Digital Readout, and Early Mandrel Withdrawal. Additional accessories such as Deburring, Flaring, Preassembling, and Cut-Off can also be built into this machine's cabinet.

Type	DB622ST	DB630ST	DB642ST	DB2076ST	DB2090ST
Max. Capacity	7/8"x.078"	1-1/4"x.065"	2"x.118"	3"x.118"	3.5"x.216"
Max. Section Modulus	.036 in <sup>3</sup>	.067 in <sup>3</sup>	.250 in <sup>3</sup>	.915 in <sup>3</sup>	1.13 in <sup>3</sup>
Max. Radius	3"	3.5"	6"	8"	9"
Bending Head Height	8"	12"	16"	18"	24"
Bending Head Length	33"	33"	33"	31"	24"
90° Bending Speed (sec.)	2	3	3.5	5	7
(*High Speed Option)	2	2	2	2.5	3.5
Motor - HP (kW)	2 HP (1.5)	3 HP (2.2)	5 HP (4.0)	10 HP (7.5)	15 HP (11)
Bending Angle Max.	190°	190°	190°	190°	190°
Bending Direction	right	right	right	right	right
Length (machine base)	129"	138"	138"	145"	145"
Width x Height	32"x48"	36"x51"	36"x51"	39"x55"	43"x55"
Weight (lbs.)	1300	1750	2200	2750	4850



The Transfluid "ST" Series' robust construction incorporates an extended bending head capable of bending as tight as 1D. Standard features include Automatic Bending Sequence, Independent Adjustment of Pressure Die, and Quick Change Tooling. Optional accessories offered are Following Pressure Die, Pressure Die Assist, Early Mandrel Withdrawal, Automatic Tool Reset, Automatic Mandrel Lubrication, Colleted Plane of Bend Device and Digital Readouts. Modifications such as Left Bending, Extended Radius, Radius Changer, Faster Bending Speeds, and Toggle Lever Clamping are also available.

Three types of control are available:

1. Digital with Selector Switch (individual selection of up to 4 pre-programmed bend angles)
2. PLC technology (stores 500 different parts each with up to 20 bend angles in sequence)
3. PC technology (3-axis data and encoder feedback prevent bending until tube is accurately positioned by the operator utilizing automatic stops commanded from the control.)

Type	DB40115	DB40139	DB40168
Max. Capacity	4-1/2"x.236"	5-1/2"x.236"	6-5/8"x.375"
Max. Section Modulus	3.25 in <sup>3</sup>	7.46 in <sup>3</sup>	11.30 in <sup>3</sup>
Max. Radius	14"	14"	24"
90° Bending Speed (sec.)	12	14	18
(*High Speed Option)	8	8	-
Motor - HP (kW)	30 HP (22)	30 HP (22)	40 HP (30)
Bending Angle Max.	190°	190°	190°
Bending Direction	right	right	right
Length	157"-275"	157"-275"	295"
Width x Height	71"x59"	71"x59"	98"x63"
Weight (lbs.)	17,600	35,200	52,800



Unsurpassed in quality and performance, the Transfluid "S" Series mandrel bending machines can easily bend tubes to 3-1/2" or 4-1/2" diameter with wall thickness up to .750". The DB40168 was designed for bending high alloy steels up to 6-5/8" diameter. With Boosted Pressure Die to prevent wall thinning and Automatic Bending Sequence as standard features, these machines are ideally suited for shipyards or large plant environments. For thinner wall tubes, the "L" Series employs similar but lighter construction. In addition to the optional accessories as in the "ST" Series, these machines also offer hydraulic movement of the length and rotation for positioning heavier materials.

# transfluid®

## Mandrel Bending Machines

### Compact Mandrel Benders (K Series)

The compact line of machines are built with space in mind. These portable benders offer hydraulic muscle with digital accuracy. With capacity up to 3 inches, bend radii as tight as 1.5 X Diameter and tolerance of +/- .1 degree, these machines are as versatile as they are economical. Accessories such as deburring and cut-off saws can be built into the cabinet to fit your requirements.

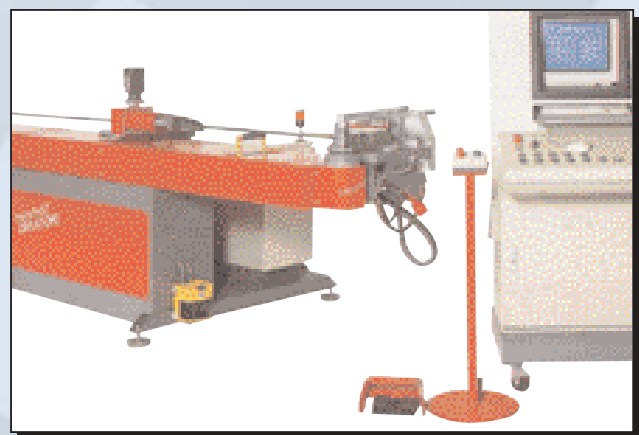


### Stationary Mandrel Bending Machines

The ST series of benders is designed with production and the most extreme applications in mind. These machines are made to order to insure the highest quality bends. With a huge array of available options, an ST bender can be tailored to exactly fit your application. Tubes up to 6 inches can be bent to a 1X diameter radius and held to a tolerance of thousandths with your choice of controllers; Electro-mechanical, PLC with 500 part memory or PC based 3 axis control.

### CNC Mandrel Bending Machines

The ultimate in tube bending technology! Transfluid offers two different levels of CNC controls to assure the right machine for high volume work or the ultra fast setup requirements of custom fabricators. Either a digital control to accept offline program files is used or a Windows™ based PC control to interface with the servo motor driven bender.



**CALL TODAY WITH YOUR SPECIAL BENDING REQUIREMENTS.**

**Toll Free Order Line 1-877-VAN-SANT or Fax 641-628-2614**

T  
U  
B  
E  
  
B  
E  
N  
D  
I  
N  
G  
  
M  
A  
C  
H  
I  
N  
E  
S

# Trick-Tools.com



Monthly Web Specials  
Online Ordering

Visit Our Website For The Latest Products, Monthly Web Specials and Technical Resources

- Angle Finders & Levels
- Bead Form Tools
- Brakes & Shears
- Grinding & Sanding
- Iron Workers
- Saws
- Sheet Metal Cutters
- Tube Bending Machines
- Tube Coping Machines
- Used & Demo Machines
- Welding Accessories

**Van Sant**

Enterprises, Inc.

*Metal Fabricating Solutions*

Van Sant Enterprises, Inc.  
P.O. Box 346  
Pella, IA 50219